

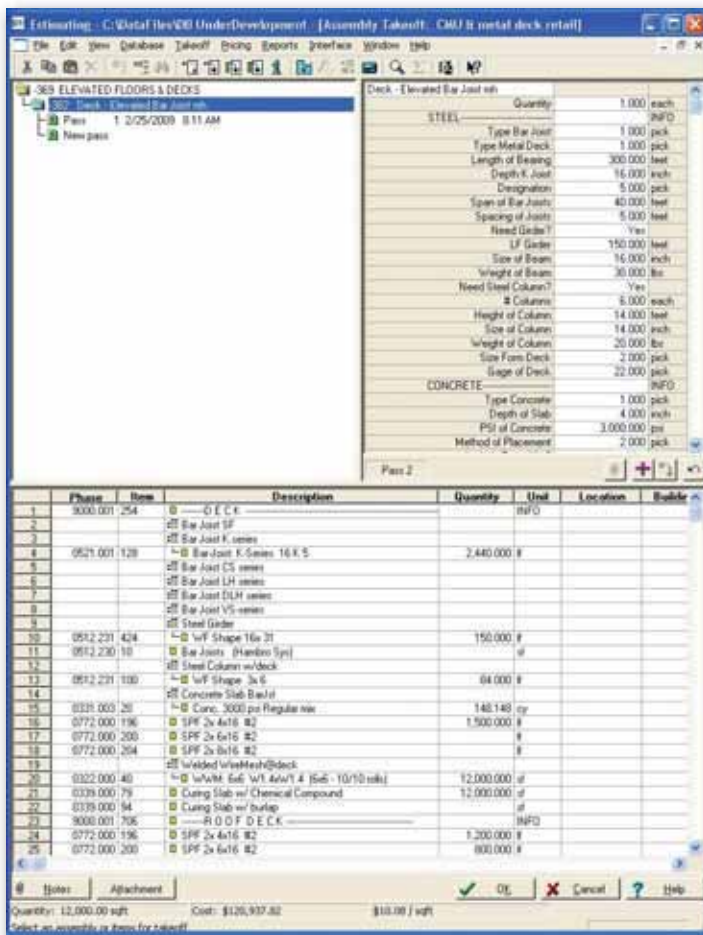
# Sage Construction and Real Estate Solutions

## Advanced Assembly Commercial Database

For use with Estimating Standard and Extended

When it comes to running your business, you're only as effective as the information you have to make decisions. That's why it's so important for your estimating database to work the way you do, not the other way around. Even if you're running the best, most sophisticated and powerful Estimating solution available, if it's not backed by an equally powerful and flexible database, positioning your business for success is certain to be a great challenge.

So, how do you know which database is the right one to meet your specific needs? No single database in the world can meet the needs of every business right out-of-the-box. And, much like everyone has their own unique style for estimating, the selection of your database depends greatly upon how you will need to rely on it now, and in the future.



◀ Unlike a standard, one-size-fits-all database, the Advanced Assembly Commercial Databases provides you with a wealth of benefits designed to increase the productivity of your business.

The above example (Bar Joist Assembly) begins with five types of bar joists available from fabricators; three types of metal decking with depth and gages options, concrete topping, forms, fireproofing, four optional roof types as well as six insulation types.

Sage Construction and Real Estate(CRE) is now offering a new Advanced Assembly Commercial Database for use with Estimating Standard and Estimating Extended. Designed to meet a wide range of contractor's unique needs, this powerful new database will support a variety of distinct requirements that truly works the way your business does.

The Advanced Assembly Commercial database provides you with a wealth of benefits, including:

- Easy Implementation. It's intuitive, and requires minimal review and editing, so you're up and running more quickly.
- Comprehensive assemblies with detailed cost items.
- Contains current manufacturers pricing.
- Most assemblies support both "man-hour" and "unit pricing", it's up to you.
- Estimates both self-performed and subcontract work.
- Provides multiple methods of labor and material takeoff.
- Produces detailed takeoff quantities and a Bill of Materials for soliciting vendor quotes and ordering materials.
- Helps prepare and streamline processes such as: bid solicitation, buyout, project scheduling and AIA billing.

And, although an optional view, CSI MasterFormat™ 2004, estimates can also be sorted by MasterFormat™ '95, Trade, Construction Schedule or Activities, Schedule of Value, Location, and much more.\*

\*Requires Estimating Extended

## Advanced Assembly Commercial Database Assembly List

### Special Estimates

Conceptual Estimate

### Bids, Quotes, and Allowances

Commercial Lump-Sum Subcontractor Bids  
Material Quotes

### General Requirements

Mobilization: (one-time, startup costs)  
Project Overhead (monthly operations)  
Close-out  
Equipment: General  
Equipment: Hoisting

### Site Work

Site-Prep & Excavation  
Paving  
Sidewalks  
Handicap ramp  
Irrigation System  
Landscaping

### Slab & Foundation Systems

Continuous or Strip Footings  
Pad Footing with Piers  
Pile Cap Footing with Piles  
Grade Beam with Piles  
Flat & Monolithic Slab On-Grade

### Flat Deck Systems

Cast-in-Place Concrete Decks  
Pre-cast Hollow Core Decks  
Bar Joist & Metal Decks

### Sloped Roof Systems

Metal Truss Roof System  
Steel Beam and Purlin Roof System

### Doors, Windows & Glass Openings

Opening - Storefront & Fixed Glass  
Opening - Windows  
Opening - Doors  
Opening - Overhead Doors

### Wall Systems

Block Stem Wall  
Block Exterior Wall

Block Interior Wall  
Metal Frame Exterior Wall  
Metal Frame Interior Wall  
Concrete Cast-in-Place Wall

### Columns & Chases

Column - Wood, Plastic, Block, & Precast  
Column - Framed Chase  
Column - Cast-in-Place Round Concrete  
Column - Cast-in-Place Square Concrete

### Stairs & Railing

Stairs - Metal Pan Filled  
Stairs - Cast-in-Place Concrete  
Stairs - Pre-cast Concrete

### Commercial Room Finishes

Ceiling Finishes, Drops & Bulkheads  
Room Finishes: Office \_\_\_\_  
Room Finishes: Exit Corridor  
Room Finishes: Restroom  
Room Finishes: Gallery  
Room Finishes: Kitchens  
Room Finishes: Utility Room  
Room Finishes: Balcony & Deck

### Equipment

Commercial Equipment  
Elevator & Lift

### HVAC, Electrical, & Plumbing Systems

Fire Alarm System  
Fire Sprinkler System  
Gas System  
HVAC System  
Plumbing System  
Electrical System

### Shell Buildings

Manufactured Metal Building  
Laminated Arch Shell  
Structural Steel Frame  
Cast-in-Place Concrete Shell

Contact Alliance Solutions Group, LLC. for more information.  
888-559-9540 / [info@alliance-sg.com](mailto:info@alliance-sg.com) / [www.alliance-sg.com](http://www.alliance-sg.com)