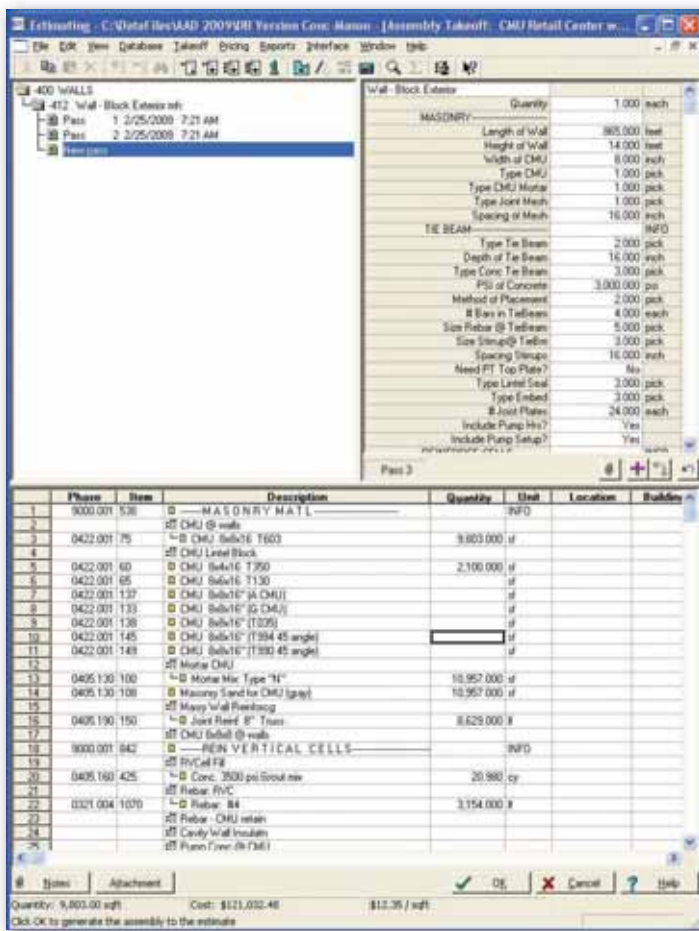


Sage Construction and Real Estate Solutions

Advanced Assembly Concrete/Masonry Database For use with Estimating Standard and Extended

When it comes to running your business, you're only as effective as the information you have to make decisions. That's why it's so important for your estimating database to work the way you do, not the other way around. Even if you're running the best, most sophisticated and powerful Estimating solution available, if it's not backed by an equally powerful and flexible database, positioning your business for success is certain to be a great challenge.

So, how do you know which database is the right one to meet your specific needs? No single database in the world can meet the needs of every business right out-of-the-box. And, much like everyone has their own unique style for estimating, the selection of your database depends greatly upon how you will need to rely on it now, and in the future.



◀ Unlike a standard, one-size-fits-all database, the Advanced Assembly Concrete/Masonry Databases provides you with a wealth of benefits designed to increase the productivity of your business.

Containing more than thirty comprehensive assemblies, the above example is one of several types of masonry walls included. Beginning with five widths in six types of CMU, joint reinforcement, four types of mortar mix, cell reinforcement and grouting, tie-beam (CMU or formed and poured) with any size and configuration of rebar, and pre-cast lintels for up to nine different sized openings in one pass.

Sage Construction and Real Estate (CRE) is now offering a new Advanced Assembly Concrete/Masonry Database for use with Estimating Standard and Estimating Extended. Designed to meet a wide range of contractor's unique needs, this powerful new database will support a variety of distinct requirements that truly works the way your business does.

The Advanced Assembly Concrete/Masonry database provides you with a wealth of benefits, including:

- Easy Implementation. It's intuitive, and requires minimal review and editing, so you're up and running more quickly.
- Comprehensive assemblies with detailed cost items.
- Contains current manufacturers pricing.
- Most assemblies support both "man-hour" and "unit pricing", it's up to you.
- Estimates both self-performed and subcontract work.
- Provides multiple methods of labor and material takeoff.
- Produces detailed takeoff quantities and a Bill of Materials for soliciting vendor quotes and ordering materials.
- Helps prepare and streamline processes such as: bid solicitation, buyout, project scheduling and AIA billing.

And, although an optional view, CSI MasterFormat™ 2004, estimates can also be sorted by MasterFormat™ '95, Trade, Construction Schedule or Activities, Schedule of Value, Location, and much more.*

*Requires Estimating Extended

Advanced Assembly Concrete/Masonry Database Assembly List

General Requirements

Mobilization: (one-time, startup costs)
Equipment: General

Demolition & Remodel

Repair Masonry Opening

Site Work

Paving
Sidewalks
Handicap Ramp
Retaining Wall
Block Site Wall

Slab & Foundation Systems

Continuous or Strip Footings
Pad Footing with Piers
Pile Cap Footing with Piles
Grade Beam with Piles
Flat & Monolithic Slab On-Grade

Wall Systems

Block Stem Wall
Block Exterior Wall
Block Interior Wall
Concrete Cast-in-Place Wall
Concrete Tilt-Wall

Columns & Chases

Column - Cast-in-Place Round Concrete
Column - Cast-in-Place Square Concrete

Stairs & Railing

Stairs - Metal Pan Filled
Stairs - Cast-in-Place Concrete
Stairs - Pre-cast Concrete

Shell Buildings

Cast-in-Place Concrete Shell

Contact Alliance Solutions Group, LLC. for more information.
888-559-9540 / info@alliance-sg.com / www.alliance-sg.com