

Sage Construction and Real Estate Solutions

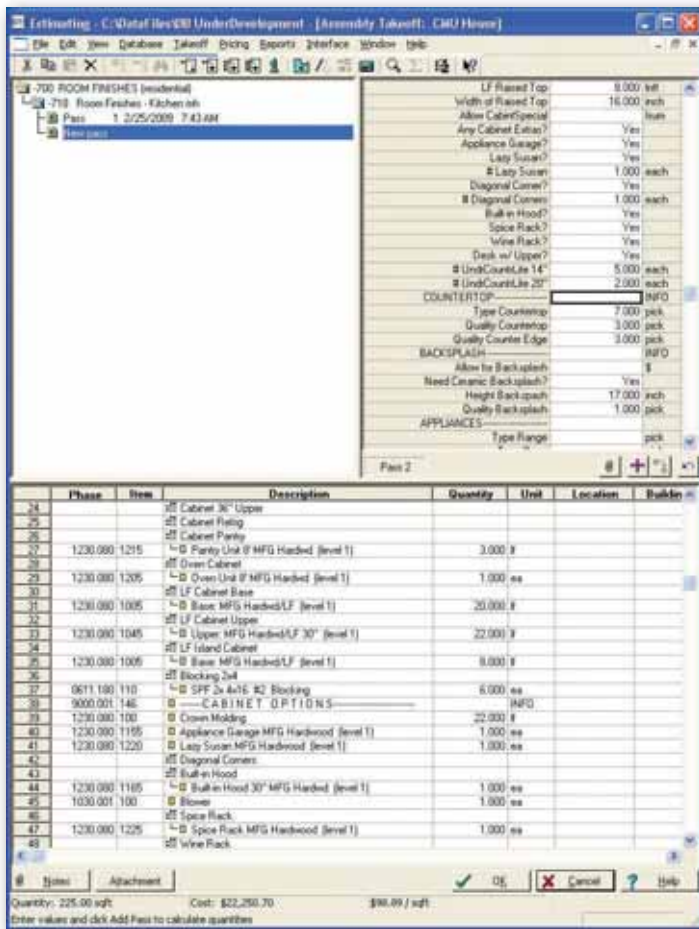
Advanced Assembly Residential Database

For use with Estimating Standard and Extended

When it comes to running your business, you're only as effective as the information you have to make decisions. That's why it's so important for your estimating database to work the way you do, not the other way around. Even if you're running the best, most sophisticated and powerful Estimating solution available, if it's not backed by an equally powerful and flexible database, positioning your business for success is certain to be a great challenge.

So, how do you know which database is the right one to meet your specific needs? No single database in the world can meet the needs of every business right out-of-the-box. And, much like everyone has their own unique style for estimating, the selection of your database depends greatly upon how you will need to rely on it now, and in the future.

◀ *Unlike a standard, one-size-fits-all database, the Advanced Assembly Residential Databases provides you with a wealth of benefits designed to increase the productivity of your business.*



Containing more than fifty comprehensive assemblies, the above example (Kitchen Assembly – 1 of 8 room finishes), includes any combination of thirteen types of finish flooring, three ways to takeoff cabinets (four types and three quality levels), nine types of countertop materials, backsplash, appliances, storage, decorative beams, plus over twenty other options.

Sage Construction and Real Estate(CRE) is now offering a new Advanced Assembly Residential Database for use with Estimating Standard and Estimating Extended. Designed to meet a wide range of contractor's unique needs, this powerful new database will support a variety of distinct requirements that truly works the way your business does.

The Advanced Assembly Residential database provides you with a wealth of benefits, including:

- Easy Implementation. It's intuitive, and requires minimal review and editing, so you're up and running more quickly.
- Comprehensive assemblies with detailed cost items.
- Contains current manufacturers pricing.
- Most assemblies support both "man-hour" and "unit pricing", it's up to you.
- Estimates both self-performed and subcontract work.
- Provides multiple methods of labor and material takeoff.
- Produces detailed takeoff quantities and a Bill of Materials for soliciting vendor quotes and ordering materials.
- Helps prepare and streamline processes such as: bid solicitation, buyout, project scheduling and AIA billing.

And, although an optional view, CSI MasterFormat™ 2004, estimates can also be sorted by MasterFormat™ '95, Trade, Construction Schedule or Activities, Schedule of Value, Location, and much more.*

*Requires Estimating Extended

Advanced Assembly Residential Database Assembly List

Special Estimates

Conceptual Estimate

Bids, Quotes, and Allowances

Residential Lump-Sum Subcontractor Bids
Material Quotes
Allowances

General Requirements

Mobilization: (one-time, startup costs)
Project Overhead (monthly operations)
Close-out
Equipment: General

Demolition & Remodel

Demo Structure (footing, slab, floors, & walls)
Demo Interior (finishes, drywall, doors, & cabinets)

Site Work

Site-Prep & Excavation
Paving
Sidewalks
Irrigation System
Landscaping
Pool

Slab & Foundation Systems

Continuous or Strip Footings
Pad Footing with Piers
Flat & Monolithic Slab On-Grade
Basement Slab

Flat Deck Systems

Wood Frame Floor & Decks
Exterior Wood Frame Deck

Sloped Roof Systems

Rafter Roof System
Wood Truss Roof System
Wood Framed Dormer

Doors, Windows & Glass Openings

Opening - Windows
Opening - Doors
Opening - Overhead Doors

Wall Systems

Block Stem Wall
Block Exterior Wall
Wood Frame Exterior Wall
Wood Frame Interior Wall
Wood Framed Wall @ Bay Window
Concrete Cast-in-Place Wall

Columns & Chases

Column - Wood, Plastic, Block, & Precast
Column - Cast-in-Place Round Concrete

Stairs & Railing

Wood Frame Stairs

Residential Room Finishes

Ceiling Finishes, Drops & Bulkheads
Room Finishes: Living Area
Room Finishes: Bath
Room Finishes: Kitchen
Room Finishes: Utility
Room Finishes: Garage & Storage
Room Finishes: Balcony & Deck
Room Finishes: Outdoor Living
Room Finishes: Summer Kitchen

Equipment

Residential Equipment
Elevator & Lift

HVAC, Electrical & Plumbing Systems

Gas System
HVAC System
Plumbing System
Electrical System

Contact Alliance Solutions Group, LLC. for more information.
888-559-9540 / info@alliance-sg.com / www.alliance-sg.com