

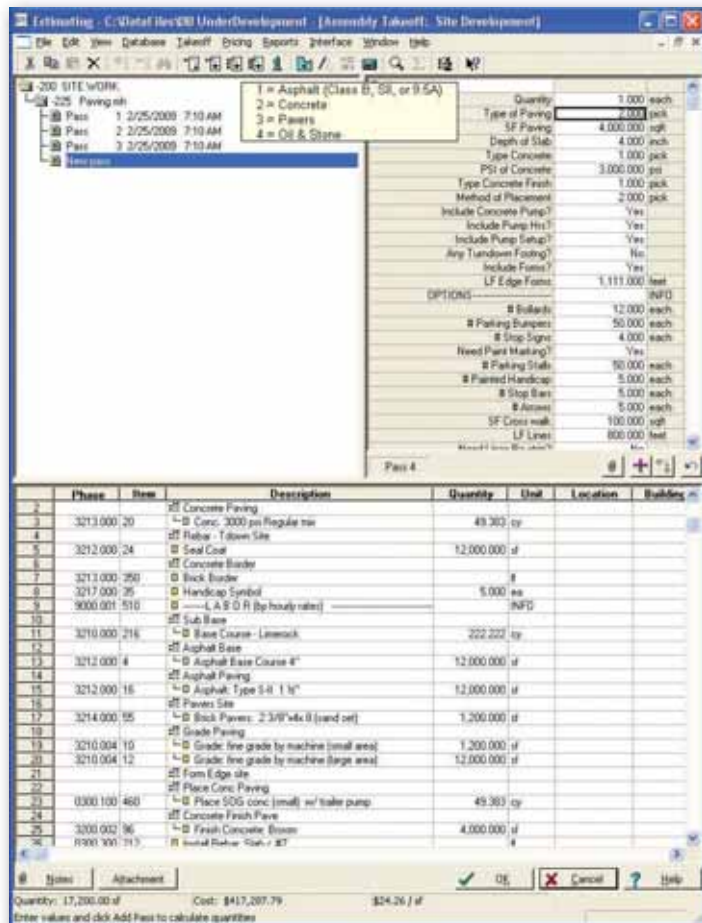
# Sage Construction and Real Estate Solutions

## Advanced Assembly Site Work Database

For use with Estimating Standard and Extended

When it comes to running your business, you're only as effective as the information you have to make decisions. That's why it's so important for your estimating database to work the way you do, not the other way around. Even if you're running the best, most sophisticated and powerful Estimating solution available, if it's not backed by an equally powerful and flexible database, positioning your business for success is certain to be a great challenge.

So, how do you know which database is the right one to meet your specific needs? No single database in the world can meet the needs of every business right out-of-the-box. And, much like everyone has their own unique style for estimating, the selection of your database depends greatly upon how you will need to rely on it now, and in the future.



◀ Unlike a standard, one-size-fits-all database, the Advanced Assembly Site Work Databases provides you with a wealth of benefits designed to increase the productivity of your business.

Containing more than twenty comprehensive assemblies, the above example (Paving Assembly) can be used to takeoff three kinds of paving (pavers, concrete, and asphalt). Pavers paving includes five sizes and borders. Concrete includes four types, seven finishes, and four ways to pump. Asphalt paving includes specification options for thickness for topcoat, thickness for base coat, and type of subbase. In addition to paving, the assembly includes bollard, parking bumpers, and seven types of paint marking.

Sage Construction and Real Estate (CRE) is now offering a new Advanced Assembly Site Work Database for use with Estimating Standard and Estimating Extended. Designed to meet a wide range of contractor's unique needs, this powerful new database will support a variety of distinct requirements that truly works the way your business does.

The Advanced Assembly Site Work database provides you with a wealth of benefits, including:

- Easy Implementation. It's intuitive, and requires minimal review and editing, so you're up and running more quickly.
- Comprehensive assemblies with detailed cost items.
- Contains current manufacturers pricing.
- Most assemblies support both "man-hour" and "unit pricing", it's up to you.
- Estimates both self-performed and subcontract work.
- Provides multiple methods of labor and material takeoff.
- Produces detailed takeoff quantities and a Bill of Materials for soliciting vendor quotes and ordering materials.
- Helps prepare and streamline processes such as: bid solicitation, buyout, project scheduling and AIA billing.

And, although an optional view, CSI MasterFormat™ 2004, estimates can also be sorted by MasterFormat™ '95, Trade, Construction Schedule or Activities, Schedule of Value, Location, and much more.\*

\*Requires Estimating Extended

## **Advanced Assembly Concrete/Masonry Database Assembly List**

### **General Requirements**

Mobilization (one-time, startup costs)  
Project Overhead: (monthly operations)  
Equipment: General  
Equipment: Hoisting

### **Demolition & Remodel**

Demo Site (buildings, paving, fence, & utilities)  
Demo Structure (footing, slab, floors, & walls)

### **Site Work**

Site-Prep & Excavation  
Storm Drainage System  
Sanitary Sewer System  
Water System  
Fire Line System  
Curbs & Gutters  
Paving  
Sidewalks  
Handicap ramp  
Irrigation System  
Landscaping  
Site Improvements  
Retaining Wall  
Site Block Wall

Contact Alliance Solutions Group, LLC. for more information.  
888-559-9540 / [info@alliance-sg.com](mailto:info@alliance-sg.com) / [www.alliance-sg.com](http://www.alliance-sg.com)