



# Sage Timberline Estimating

Advanced Assembly Databases

## Turbo-charge your takeoffs with prebuilt, trade-specific cost databases.

The Advanced Assembly Databases offer a complete range of “out-of-the-box” cost databases that help you put your best bid forward faster. These databases can produce Unit-Price, Man-Hour or Turn-Key estimates for any trade. They ensure precise calculations and costs across all aspects of the bid, including: labor, subcontractor bids, materials, equipment, and overhead. Choose an individual database that is fitting for your particular trade or need. The following Advanced Assembly Databases are available:

- **Commercial** – for steel and concrete commercial construction.
- **Residential** – for wood framed residential construction.
- **Site Development** – for excavation, underground utilities, paving and retaining walls.
- **Concrete and Masonry** – for masonry and concrete foundations, slabs, walls, columns, elevated decks, site concrete and demolition.
- **Starter** – provides a range of assemblies and cost items from the databases above to meet diverse contracting needs.
- **Composite** – includes over 122 assemblies and 60,000 items and all databases above to meet the most diverse construction needs.

## Let Sage Timberline Estimating do the heavy lifting for you.

Each of the Advanced Assembly Databases can be used literally out of the box with little or no updating required. Costs are periodically updated with current manufacturer pricing, ensuring confidence in each bid you submit. Sage Timberline Estimating paired with an Advanced Assembly Database guides you through the assembly takeoff process allowing you to quickly populate your bid worksheet, all while instantly calculating costs.

For more information on how Sage Timberline Estimating, along with an Advanced Assembly database can help you put your best bid forward faster, visit:

[www.SageTimberlineEstimating.com](http://www.SageTimberlineEstimating.com) or call **800-628-6583**.

### BENEFITS

Ready to go, out of the box with little or no modifications required

Comprehensive assemblies with hundreds or thousands of detailed cost items

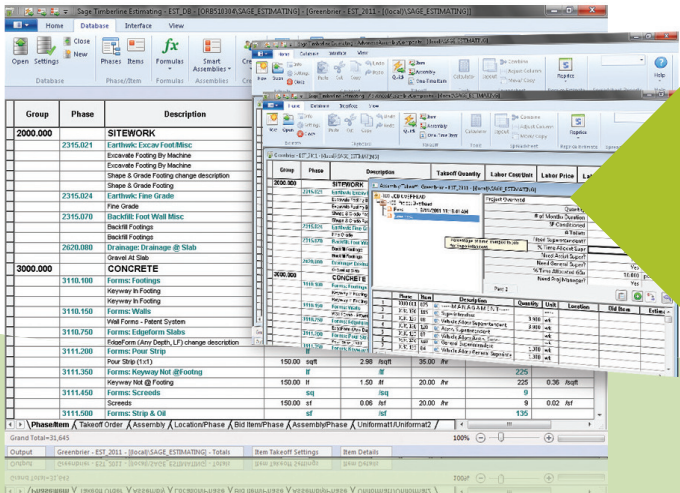
Contains the most current manufacturer pricing for items

Assemblies are built to support both “man-hour” and “unit pricing”

Estimates both self-performed and subcontract work

Produces detailed takeoff quantities and a bill of materials for soliciting vendor quotes and ordering materials

Helps prepare and streamline bid solicitation, buyout, project scheduling, and AIA billing



The Advanced Assembly Databases offer a complete range of “out-of-the-box cost databases that help you put your best bid forward faster.

# Sage Timberline Estimating

Advanced Assembly Databases

## Available Assemblies

The following is a general list of the “types” of Assemblies available in the Advanced Assembly Databases.

### Set Up Assemblies

- Setup Defaults
- Allowances
- Lump-Sum Commercial Bids
- Lump-Sum Residential Bids
- Material Quotes

### Beams

- Concrete
- Steel
- Wood

### Columns and Chases

- Cast-in-Place Concrete Round
- Cast-in-Place Concrete Square
- Framed Chase
- Wood, Plastic, Block, Steel and Precast

### Commercial Room Finishes

- Ceiling Finishes–Drops and Bulkheads
- Room Finishes–Office
- Room Finishes–Open Floor Space
- Room Finishes–Exit Corridor
- Room Finishes–Restroom
- Room Finishes–Galley
- Room Finishes–Kitchen
- Room Finishes–Utility
- Room Finishes–Balcony/Deck

### Demolition

- Exterior (roof, brick, siding, door, window)
- Repair Masonry Opening
- Sitework (building, pave, fence, utilities, landscape)
- Structural (footing, slab, floors, walls, ceiling)

### Doors, Windows and Glass Openings

- Doors
- Fixed Glass and Storefront
- Overhead Doors
- Windows

### Elevated Floors and Decks

- Elevated Concrete
- Elevated Hollow Core
- Elevated Bar Joist
- Elevated Metal Framed

- Elevated Wood Framed
- Exterior Wood Framed

### Foundations and Slabs

- Footing–Continuous/Strip
- Footing–Grade Beam
- Footing–Pile Cap
- Footing–Spread/Isolated/Pad
- Elevator Pit
- Piling
- Slab–Basement
- Slab–On-Grade

### HVAC, Electrical, and Plumbing

- Electrical System
- Fire Alarm System
- Fire Sprinkler System
- Gas System
- HVAC System
- Plumbing System

### Job Overhead

- Equipment: Commercial
- Equipment: Elevator and Lift
- Equipment: General
- Equipment: Hoisting
- Equipment: Residential
- Mobilization
- Project Overhead
- Project Close-out

### Residential Room Finishes

- Ceiling Finishes–Drops and Bulkheads
- Room Finishes–Living Area
- Room Finishes–Powder Room
- Room Finishes–Master Bath
- Room Finishes–Hall Bath
- Room Finishes–Kitchen
- Room Finishes–Laundry
- Room Finishes–Garage and Storage
- Room Finishes–Outside Courtyard
- Room Finishes–Summer Kitchen
- Room Finishes–Balcony/Deck

### Site Work

- CMU Wall
- Curb and Gutters
- Excavation
- Fencing
- Fire Line System
- Handicap Ramps

- Improvements
- Irrigation System
- Landscaping
- Paving
- Prep and Clearing
- Retaining Walls
- Sanitary Sewer System
- Sidewalks
- Storm Drainage System
- Trenching Only
- Water System

### Stairs and Railings

- Metal Pad Filled
- Cast-in-Place Concrete
- Pre-cast Concrete
- Wood Framed

### Sloped Roofs

- Mansard/Canopy/Projection
- Metal Trusses
- Wood Framed Dormer
- Wood Rafter
- Wood Trusses
- Steel with Purlins

### Walls

- CMU Stem Foundation
- CMU Exterior
- CMU Interior
- CMU Parapet
- Concrete Cast-in-Place
- Concrete Tilt-Up
- Curtain
- Metal Framed Exterior
- Metal Framed Interior
- Metal Framed Parapet
- Wood Framed Bay-window
- Wood Framed Exterior
- Wood Framed Interior
- Wood Framed Parapet

### Special Estimates

- Estimate–Model Homes
- Estimate–Based on Unit Prices
- Estimate–Conceptual
- Shell–Manufactured Metal Building
- Shell–Laminated Arch
- Shell–Structural Steel Frame
- Shell–Cast-in-Place Concrete

## Sage Construction and Real Estate

15195 NW Greenbrier Parkway | Beaverton, OR 97006

## ALLIANCE SOLUTIONS GROUP

888.559.9540 | [www.alliance-sg.com](http://www.alliance-sg.com)

